

5. FDA Certification

6. Marketing: promotion of the fundamental method towards popularity.

7. Development of a franchise for other countries of the world;

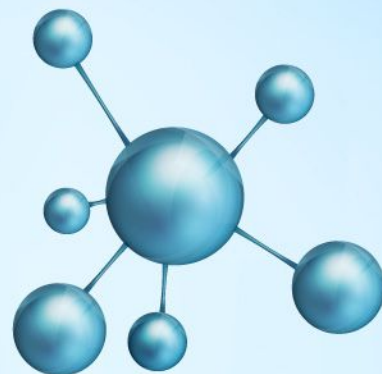
8. Development of an IT platform based on a neural network and cloud data warehousing for all blood tests.



9. Development of Second Opinion IT Platform.

10. Development of a think tank with disease treatment recommendations.

11. Determination and implementation of actual procedures of compensating blood tests costs for financially disadvantaged citizens.



CONTACT DATA

Our contact person is

Roman Buhtiyarov

Development Director

Mobile phone numbers :

+38 050 303 8433

+38 067 570 3707

r.buhtiyarov@gmail.com



CANCER INTELLIGENCE AND PREVENTION

swiftly, accurately and widespread

BIS company (Bionic Intellectual Systems) develops technologies based on a fundamental method allowing early revealing certain types of cancer. The method of diagnosing tumor disorders was developed by Dr. Evgeniya Stefanova Skobeltsina and Professor Hovallo since 1985.

Objectives of the project are the following:

- Widespread access to innovative technologies revealing cancer on a level of clinics in regional centers.
- Expanding practical application of developed technologies and the fundamental method to other human diseases and also veterinary diseases.

THE TECHNOLOGY

The fundamental method has been patented in Germany, the UK and in Ukraine.

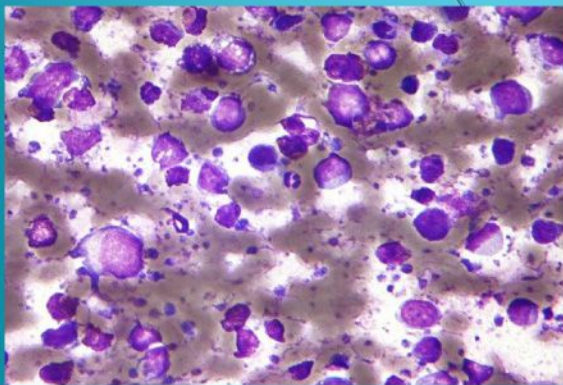
This method is a **Monomethod** which could be applied instead of many different methods and it could provide absolutely accurate conclusions much faster in comparison with them.

The method provides the following conclusions:

- **Does a patient have cancer or not?**
- **If yes, what is a stage?**
- **If no, what is a health status?**

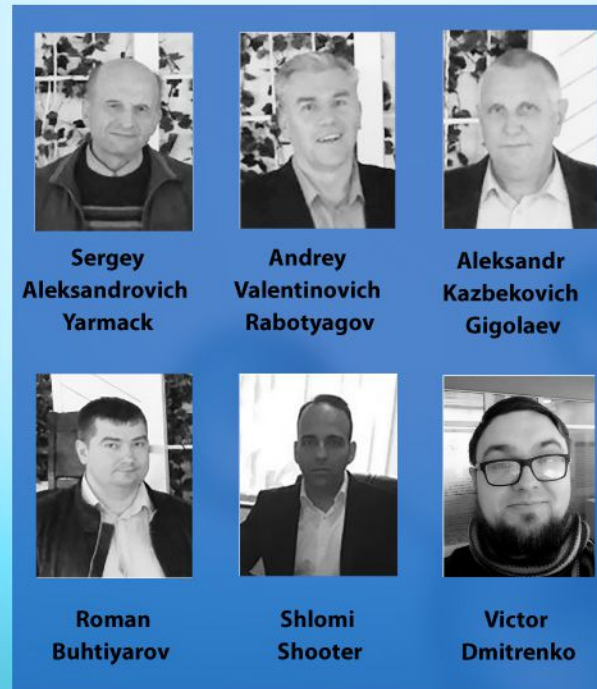
The method uses measuring the surface areas of the arterial and venous blood lymphocyte nuclei and comparing said surface areas to corresponding cell surface areas of different lymphocyte groups.

The diagnosis, location of tumoral diseases and degree of extension of an oncological process are



jointly determined according to an intersection and relative positions of the regression lines and according to characteristic pictures and areas of the obtainable curves.

THE TEAM AND PARTNERS



At the moment the following corporate customers are interested in the method implementation:

- Kyv City Clinical Oncology Center.
- The Institute of gastroenterology of

the National academy of medical sciences of Ukraine.

- Different clinics of Kharkiv city.
- Oil exploration workers in Russia.

STAGES WHICH UNDERFUNDING BRAKES THE PROGRESS

1. Development of the data processing technology: stages of cancer, disposition toward cancer and terms of the disease development risk, localization.

2. Rendering clinic trials by different countries in order to determine the method's applications regardless of locations of patients.

3. Procedures of early revealing other diseases with similar symptomatology: tuberculosis, pancreatic diabetes, AIDS.

4. Improvement of the method with the following purposes:

- data processing speed
- data processing accuracy
- data processing automatization.